

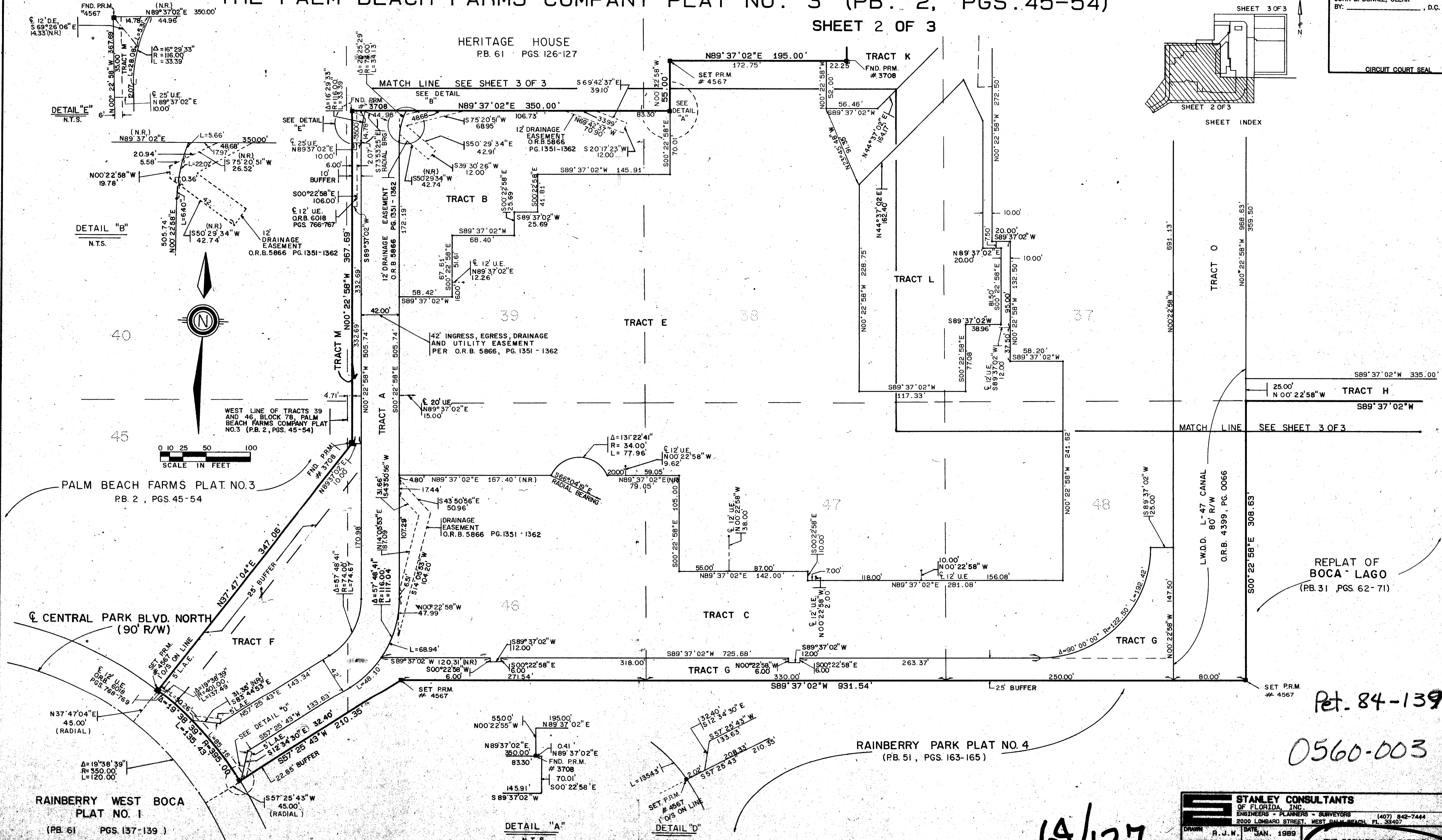
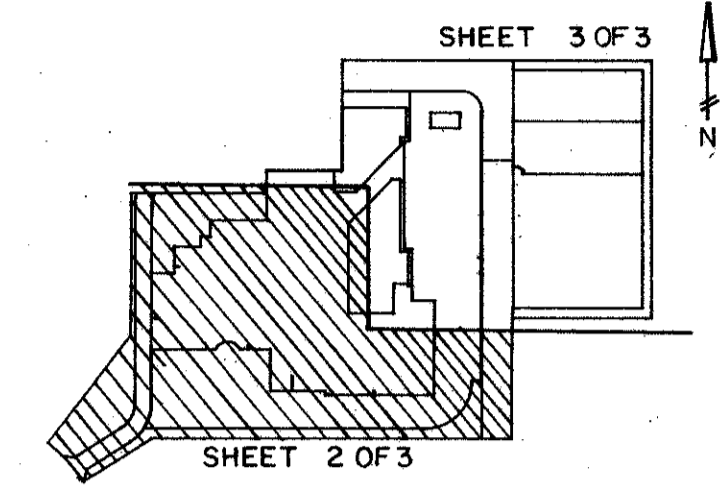
THE RICHARD AND CAROLE SIEMENS JEWISH CAMPUS

137

PART OF RAINBERRY PARK P.U.D.
 SITUATE IN SECTION 19, TOWNSHIP 47 SOUTH, RANGE 42 EAST, PALM BEACH COUNTY, FLORIDA, BEING A REPLAT OF A PORTION OF BLOCK 78, OF THE PALM BEACH FARMS COMPANY PLAT NO. 3 (PB. 2, PGS. 45-54)

STATE OF FLORIDA
 COUNTY OF PALM BEACH
 THIS PLAN WAS FILED FOR RECORD _____ DAY OF _____ AD, 1989 AND DULY RECORDED IN PLAT BOOK _____ ON PAGES _____ AND _____
 JOHN B. DUNKLE, CLERK
 BY: _____, D.C.
 CIRCUIT COURT SEAL

SHEET 2 OF 3



SUBDIVISION OF RAINBERRY PARK
 BOOK 64 PAGE 137
 PLAT NO. 137
 FILED DATE 401
 84-139
 ZIP CODE 33474
 PUB NAME Rainberry Park P.U.D.
 19/12/88
 TAZ 7-83

Pet. 84-139

0560-003

6A/137

STANLEY CONSULTANTS OF FLORIDA, INC.
 ENGINEERS - PLANNERS - SURVEYORS (407) 842-7444
 2000 LOMBARD STREET, WEST PALM BEACH, FL. 33407

DRAWN: R.J.W. DATE: JAN. 1989
 CHECKED: R.B.P. SCALE: 1"=50'
 DRAWING NO. 08-459PL

THE RICHARD AND CAROLE SIEMENS JEWISH CAMPUS
 RAINBERRY WEST, P.U.D.